

HYUNDAI

**HRP M12MVB/HRPO 12MVB
HRP M16MVB/HRPO 18MVB**

UPUTSTVA ZA KORIŠTENJE/USER MANUAL



Sadržaj

Specifikacije daljinskog upravljača	02
Rukovanje daljinskim upravljačem	03
Tipke i funkcije.....	04
Indikatori upravljača na LCD ekranu	05
Kako koristiti osnovne funkcije	06
Kako koristiti napredne funkcije	09

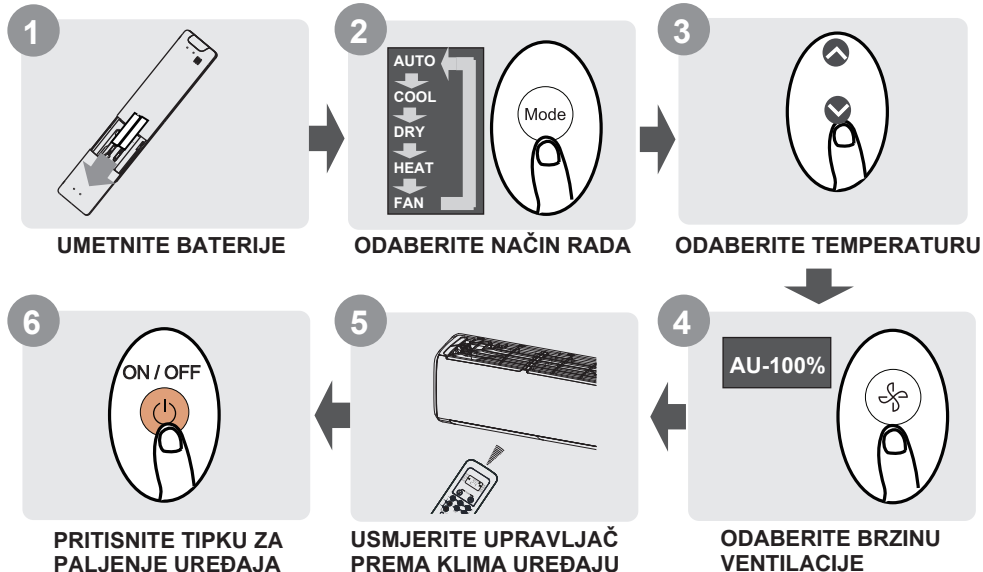
NAPOMENA

- Dizajn tipki zasnovan je na tipičnom modelu i može biti blago drugačiji od pravoga kojega ste kupili.
- Uređaj može obavljati sve funkcije koje su opisane. Ako uređaj nema neku karakteristiku onda nema ni odgovarajuću tipku za to na daljinskom upravljaču.
- Kada postoje velike razlike između ilustracije daljinskoga upravljača i opisa istog u priručniku, njegov opis u priručniku ima prednost.

Specifikacije daljinskog upravljača

Model	RG10A(F2S/H2S/G2S)/BGEF
Procijenjena voltaža	3.0V(Dry batteries R03/LR03×2)
Domet primanja signala	8m
Okoliš	-5°C~60°C(23°F~140°F)

Brza uputstva



NISTE SIGURNI ŠTO FUNKCIJA RADI?

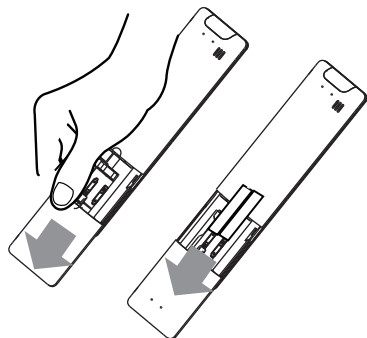
Pogledajte dio **Kako koristiti osnovne funkcije** i **Kako koristiti napredne funkcije** ovoga priručnika za detaljan opis korištenja svojeg uređaja.

Rukovanje daljinskim upravljačem

Umetanje i zamjena baterija

Vaš uređaj dolazi s dvije AAA baterije. Stavite ih u daljinski upravljač prije uporabe.

1. Odstranite poklopac na poledini daljinskog upravljača i izložite dio za baterije.
2. Umetnite baterije i pazite da ih pravilno umetnete u odjeljak za baterije.
3. Vratite poklopac.



! NAPOMENE BATERIJA

Za optimalnu izvedbu:

- Ne miješajte stare i nove baterije ili baterije različite vrste.
- Ne ostavljajte baterije u daljinskom upravljaču ako ne planirate koristiti uređaj više od 2 mjeseca.



ODLAGANJE BATERIJA

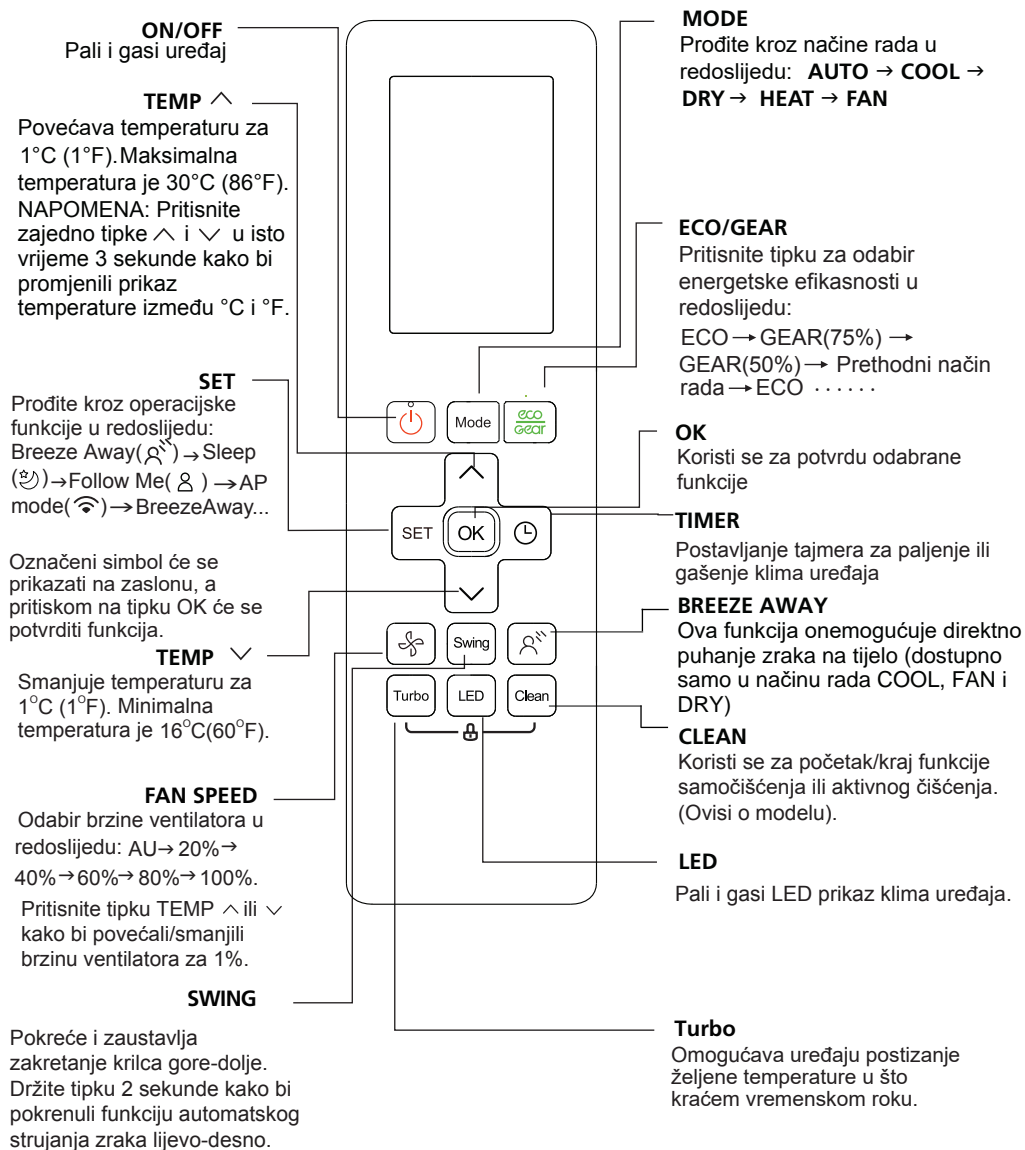
Nemojte odlagati baterije u standardnom otpadu. Pogledajte lokalne zakone vezane uz primjereno odlaganje baterija.

SAVJETI ZA KORIŠTENJE

- Daljinski uređaj mora se koristiti unutar 8 metara od uređaja.
- Uređaj će pustiti zvuk kada primi signal.
- Zastori, drugi materijali i izravna sunčeva svjetlost mogu smetati prijammiku infracrvenog signala.
- Odstranite baterije ako nećete koristiti daljinski upravljač više od 2 mjeseca.

Tipke i funkcije

Prije nego što započnete koristiti novi klima uređaj, obavezno se upoznajte s daljinskim upravljačem. Slijedi kratki uvod u sam daljinski upravljač. Za upute kako upravljati klima uređajem, pogledajte odjeljak **Kako koristiti osnovne funkcije** ovog priručnika.



Model: RG10A(F2S/H2S/G2S)/BGEF

Indikatori upravljača na LCD ekranu

Informacije su prikazane kada je kada je daljinski upravljač uključen.

Prijenos naredbi
Prikazuje se kada daljinski upravljač šalje naredbu klima uređaju

TIMER ON prikaz

TIMER OFF prikaz

Silence - prikaz funkcije

FAN SPEED prikaz
Prikazuje odabranu brzinu ventilacije:

Silence		1%
		2%-20%
LOW		21%-40%
MED		41%-60%
HIGH		61%-80%
		81%-100%
AUTO		AUTO

Brzina ventilacije se ne može namjestiti u načinu rada AUTO i u načinu odvlaživanja.

MODE prikaz
Prikazuje trenutni način rada, sadrži:

AUTO COOL DRY HEAT FAN

ECO prikaz
Prikazuje se kada je uključena funkcija ECO

GEAR prikaz
Prikazuje se kada je uključena funkcija GEAR

LOCK prikaz
Prikazuje se kada je uključena funkcija LOCK.

Prikaz Temperature/Tajmera/ Brzine ventilatora
Prikazuje se odabrana temperatura kao zadani prikaz. Brzina ventilatora i tajmer se prikazuju ako se koriste funkcije FAN ili TIMER ON/OFF.

- Temperaturni raspon: 16-30°C/60-86°F / (20-28°C/68-82°F) (ovisi o modelu)
- Raspon tajmera: 0-24 sata
- Raspon brzine ventilatora: AU -100%

Ovaj zaslon je prazan dok radi u načinu FAN.

Prikaz kretanja krlca gore-dolje

Prikaz automatskog kretanja krlca lijevo-desno

TURBO mode prikaz

A Nije dostupno za ovaj uređaj

B Nije dostupno za ovaj uređaj

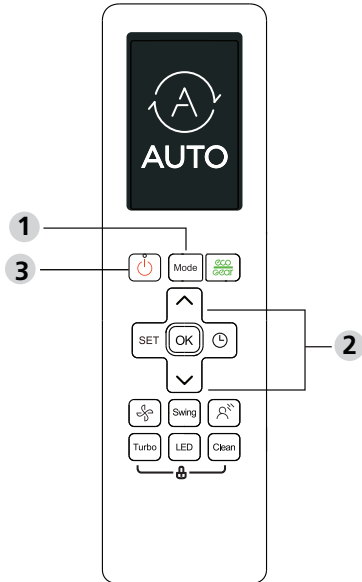
Napomena:

Svi pokazatelji prikazani na slici su u svrhu jasne prezentacije. No tijekom stvarnog rada na zaslonu se prikazuju samo znakovi relativne funkcije.

Kako koristiti osnovne funkcije

Osnovne funkcije

UPOZORENJE! Prije svake operacije provjerite da je klima uređaj uključen u struju.



POSTAVLJANJE TEMPERATURE

Raspon radne temperature za uređaje je 16-30°C(60-86°F)/20-28°C(68-82°F). Možete ju povećavati ili smanjivati u razmacima od 1°C (1°F).

AUTO način rada

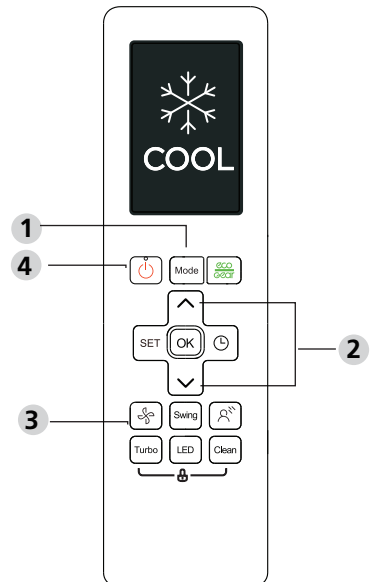
U načinu rada AUTO, uređaj će automatski odabrati način COOL (hlađenje), FAN (ventilacija) ili HEAT (grijanje) ovisno o zadanoj temperaturi.

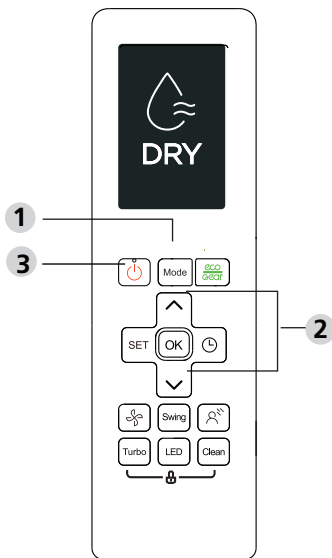
1. Pritisnite tipku **MODE** za odabir načina **AUTO**.
2. Odaberite željenu temperaturu koristeći tipke **TEMP ^** ili **TEMP v**.
3. Pritisnite tipku **ON/OFF** da bi uključili uređaj.

NAPOMENA: Brzina ventilacije se ne može mijenjati u načinu rada AUTO.

Način rada COOL (hlađenje)

1. Pritisnite tipku **MODE** za odabir načina rada **COOL**.
2. Odaberite željenu temperaturu koristeći tipke **TEMP ^** ili **TEMP v**.
3. Pritisnite tipku **FAN** za odabir željene brzine ventilacije u rasponu od AU-100%.
4. Pritisnite tipku **ON/OFF** da bi uključili uređaj.

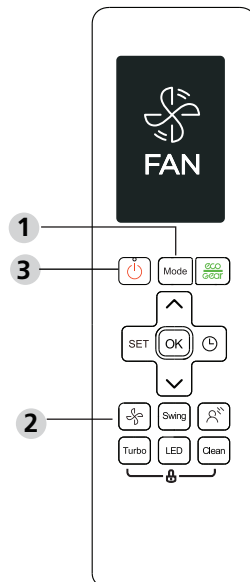




Način rada FAN (ventilacija)

1. Pritisnite tipku **MODE** za odabir načina **FAN**.
2. Pritisnite tipku **FAN** kako bi odabrali brzinu ventilacije u rasponu od AU-100%.
3. Pritisnite tipku **ON/OFF** da bi uključili uređaj.

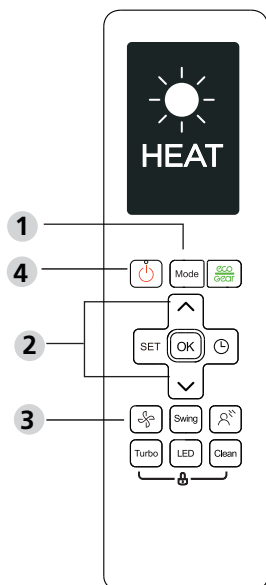
NAPOMENA: Temperatura se ne može mijenjati u načinu FAN. Kao rezultat toga na daljinskom se neće prikazivati temperatura.



Način rada HEAT

1. Pritisnite tipku **MODE** za odabir načina **HEAT**.
2. Odaberite željenu temperaturu koristeći tipke **TEMP ^** ili **TEMP v**.
3. Pritisnite tipku **FAN** za odabir željene brzine ventilacije u rasponu od AU-100%.
4. Pritisnite tipku **ON/OFF** da bi uključili uređaj.

NAPOMENA: Pri padu vanjske temperature, funkcija uređaja za grijanje može oslabiti. U takvim slučajevima preporučamo korištenje ovog uređaja zajedno s drugim uređajem za grijanje.



Postavljanje TAJMERA

TIMER ON/OFF - Postavlja vrijeme nakon kojeg se tajmer automatski pali/gasi.

TIMER ON postavke

Pritisnite tipku **TIMER** za pokretanje vremenskog slijeda **ON**.



Pritisnite tipku **Temp.** \wedge ili \vee više puta da biste postavili vrijeme nakon kojega želite da se uređaj upali



Usmjerite daljinski upravljač prema uređaju i pričekajte 1 sekundu, **TIMER ON** će se aktivirati.



TIMER OFF postavke

Pritisnite tipku **TIMER** za pokretanje vremenskog slijeda **OFF**.



Pritisnite tipku **Temp.** \wedge ili \vee više puta da biste postavili vrijeme nakon kojega želite da se uređaj ugasi



Usmjerite daljinski upravljač prema uređaju i pričekajte 1 sekundu, **TIMER OFF** će se aktivirati.

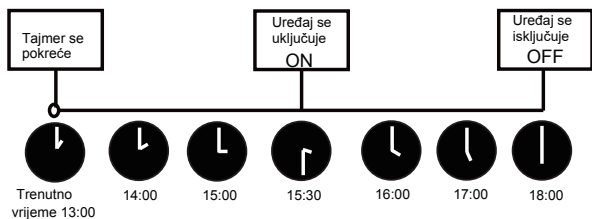
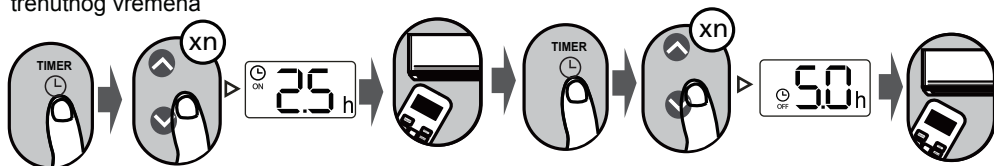


NAPOMENA:

1. Pri postavljanju funkcija paljenja ili gašenja tajmera do perioda od 10 sati, vrijeme se povećava u pomacima od 30 minuta. Nakon 10 sati i do 24, vrijeme se povećava u pomacima od sat vremena. Tajmer će se vratiti na nulu nakon 24 sata.
2. Bilo koju funkciju možete isključiti postavljanjem njenog tajmera na 0.0h.

TIMER ON & OFF postavke (primjer)

Imajte na umu da se vremenski periodi koje postavljate za obje funkcije odnose na sate nakon trenutnog vremena



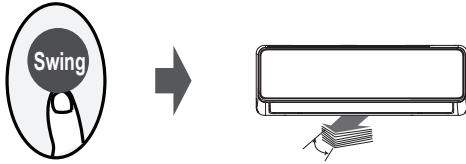
Primjer: Trenutno je 13:00, prema postavkama uređaj će se automatski uključiti za 2.5 sati (15:30), a isključiti će se u 18:00.



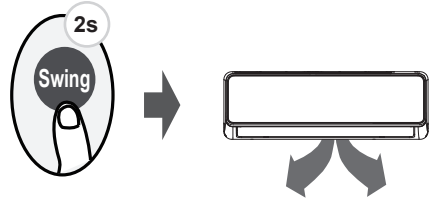
Kako koristiti napredne funkcije

Swing funkcija

Pritisnite tipku Swing

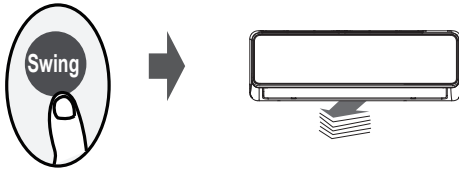


Pritiskom na tipku Swing horizontalno krilce će se kretati gore-dolje. Pritisnite tipku još jednom kako bi zaustavili kretanje.



Držite tipku više od 2 sekunde, pokrenut će se automatsko strujanje zraka lijevo-desno. (Ovisi o modelu)

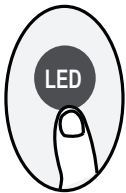
Smjer ispuha zraka



Sa svakim pritiskom na gumb, krilce će se pomaknuti u 5 različitih položaja. Nastavite stiskati gumb dok krilce ne bude pod željenim kutom.

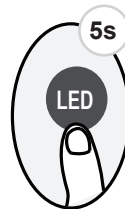
NAPOMENA: Kada je uređaj ugašen, pritiskom i držanjem tipki **MODE** i **SWING** zajedno 1 sekundu, krilce će se otvoriti pod određenim kutem što čini uređaj jednostavnim za održavanje. Pritisnite i držite tipke **MODE** i **SWING** zajedno 1 sekundu da bi resetirali krilce (Ovisi o modelu).

LED PRIKAZ



Pritisnite tipku LED

Pritisnite tipku LED da bi upalili ili ugasi prikaz temperature na klima uređaju.



Držite tipku dulje od 5 sekundi (neki uređaji)

Držite pritisnutu ovu tipku više od 5 sekundi, unutarnja jedinica prikazat će stvarnu sobnu temperaturu. Pritisnite ponovno više od 5 sekundi, vratit će se natrag za prikaz postavljene temperature.

ECO/GEAR funkcija



Pritisnite tipku X-ECO za ulazak u način energetske efikasnosti u sljedećem redoslijedu:

ECO → GEAR(75%) → GEAR(50%) → Prethodni način rada → ECO.....

Napomena: Ova funkcija je dostupana samo u načinu rada COOL (hlađenje).

ECO funkcija:

U režimu hlađenja pritisnite ovu tipku, daljinski upravljač automatski će prilagoditi temperaturu na 24°C / 75°F, brzina ventilatora će se prebaciti na Auto radi uštede energije (samo kad je zadana temperatura manja od 24°C / 75°F). Ako je zadana temperatura iznad 24°C / 75°F, pritisnite tipku ECO, brzina ventilatora će se promijeniti na Auto, zadana temperatura će ostati nepromijenjena

NAPOMENA:

Pritiskom na tipku ECO ili izmjenom načina rada ili podešavanjem postavljene temperature na manje od 24°C / 75°F zaustavit ćete ECO rad. U ECO načinu rada, zadana temperatura trebala bi biti 24°C / 75°F ili više, što može rezultirati nedovoljnim hlađenjem. Ako se osjećate nelagodno, samo ponovno pritisnite gumb ECO da biste ga zaustavili.

GEAR funkcija:

Pritisnite tipku ECO / GEAR za ulazak u GEAR operaciju na sljedeći način:

75% (do 75% potrošnje električne energije)



50% (do 50% potrošnje električne energije)



Prethodni način rada.

U radu GEAR, zaslon na daljinskom upravljaču izmjenjivat će se između potrošnje električne energije i zadane temperature.

Tihi način rada



Držite pritisnutu tipku FAN dulje od 2 sekunde da biste aktivirali/onemogućili funkciju tihog načina rada (neke jedinice).

Zbog niskofrekventnog rada kompresora, to može rezultirati nedovoljnim kapacitetom hlađenja i grijanja. Pritiskom na tipku ON/OFF, Mode, Sleep, Turbo ili Clean otkazat će se funkcija tihog rada.

FP funkcija

Pritisnite ovu tipku dva puta tijekom jedne sekunde u načinu HEAT (grijanje) i zadanom temperaturom od 16°C / 60°F ili 20°C / 68°F.

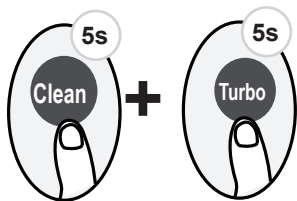


Uređaj će raditi na velikoj brzini ventilatora (dok je kompresor uključen) s temperaturom koja se automatski postavlja na 8°C / 46°F.

Napomena: Ova je funkcija samo za klima uređaj s dizalicom topline.

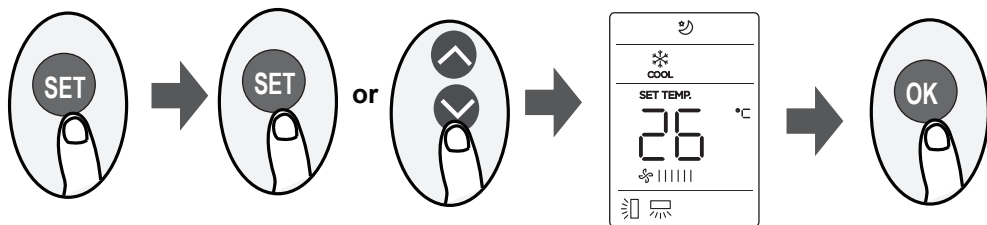
Pritisnite ovu tipku dva puta tijekom jedne sekunde u načinu HEAT (grijanje) i zadanom temperaturom od 16°C / 60°F ili 20°C / 68°F za aktivaciju FP funkcije. Pritiskom na tipku ON/OFF, Mode, Sleep, Fan ili tipku promjene temperature otkazat će se FP funkcija.

LOCK funkcija



Pritisnite istovremeno tipku Clean i Turbo više od 5 sekundi da biste aktivirali funkciju zaključavanja daljinskog upravljača. Nakon toga svi gumbi neće reagirati, osim ako ponovno pritisnete ove dvije tipke dvije sekunde kako biste onemogućili zaključavanje.

SET funkcija



- Pritisnite tipku SET za ulazak u postavke funkcija, a zatim pritisnite tipku SET ili tipku TEMP ∇ ili TEMP \blacktriangle za odabir željene funkcije. Odabrani simbol će treptati na području zaslona, pritisnite tipku OK za potvrdu.
- Da biste poništili odabranu funkciju, samo ponovite postupak.
- Pritisnite tipku SET za pomicanje kroz radne funkcije na sljedeći način:
Breeze Away* (☼) → Fresh* (☪) → Sleep (☾) → Follow Me (☺) → AP mode (☺)
[*]: Ako vaš daljinski upravljač ima tipku Breeze Away ili Fresh, ne možete koristiti SET gumb za odabir značajke Breeze Away ili Fresh.

Breeze Away funkcija (☼) (neki uređaji):

Ova značajka izbjegava izravno strujanje zraka po tijelu i pruža vam osjećaj svježine.

NAPOMENA: Ova funkcija je dostupna samo u načinu rada Cool (hlađenje), Fan (ventilacija) i Dry (odvlaživanje).

FRESH funkcija (☪) (neki uređaji):

Kada se pokrene funkcija FRESH, ionizator/plazma sakupljač prašine i UV-C lampa (ovisno o modelima) se uključuje i pomaže u uklanjanju peludi i nečistoća iz zraka.

Sleep funkcija (☾) :

SLEEP funkcija koristi se za smanjenje utroška energije dok spavate (i ne trebate jednaku temperaturu kako bi vam bilo ugodno). Ova funkcija se može aktivirati samo preko daljinskog upravljača.

NAPOMENA: SLEEP funkcija nije dostupna u režimima FAN i DRY.

Follow me funkcija (☺):

FOLLOW ME omogućava da daljinski upravljač mjeri temperaturu na svojoj trenutnoj lokaciji i šalje taj signal uređaju svakih 3 minute. Pri korištenju načina AUTO, COOL ili HEAT, izmjerena temperatura iz daljinskog upravljača (umjesto samog klima uređaja) omogućava da uređaj optimizira temperaturu oko vas i osigura maksimalnu udobnost.

NAPOMENA: Pritisnite i držite tipku Turbo sedam sekundi da biste pokrenuli / zaustavili značajku memorije funkcije Follow Me.

- Ako je memorijska značajka aktivirana, "ON" se prikazuje na zaslonu 3 sekunde.
- Ako je memorijska značajka zaustavljena, "OFF" se prikazuje na zaslonu 3 sekunde.
- Dok je memorijska značajka aktivirana, pritiskom na tipku ON / OFF, promjena načina rada ili nestanak struje neće otkazati funkciju Follow me.

AP funkcija (☺) (neki uređaji) :

Odaberite način rada AP za konfiguriranje bežične mreže. Za neke jedinice to ne radi pritiskom na tipku SET. Da biste ušli u način rada AP, neprekidno pritisnite LED tipku sedam puta u 10 sekundi.

HYUNDAI

**HRP M12MVB/HRPO 12MVB
HRP M16MVB/HRPO 18MVB**

USER MANUAL

Table of Contents

Remote Controller Specifications	02
Handling the Remote Controller	03
Buttons and Functions	04
Remote Screen Indicators	06
How to Use Basic Functions	07
How to Use Advanced Functions	10

SPECIAL NOTE

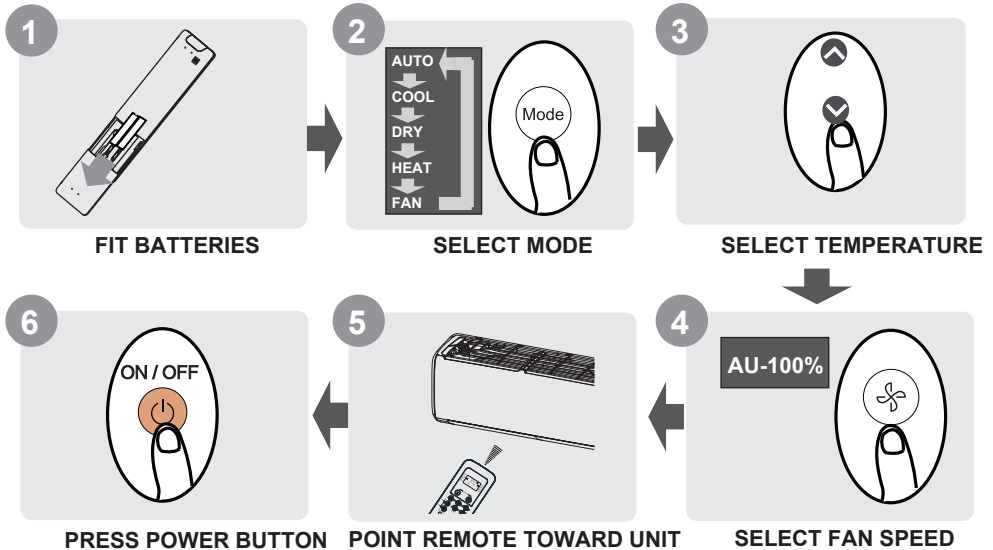
- Button designs on your unit may differ slightly from the example shown.
- If the indoor unit does not have a particular function, pressing that function's button on the remote control will have no effect.
- When there are wide differences between "Remote controller Manual" and "USER'S MANUAL" on function description, the description of "USER'S MANUAL" shall prevail.

Remote Controller Specifications

Model	RG10A(F2S)/BGEF, RG10A(F2S)/BGEFU1, RG10A1(F2S)/BGEF, RG10A2(F2S)/BGEFU1, RG10A2(F2S)/BGCEFU1, RG10A2(F2S)/BGCEF, RG10A10(F2S)/BGEF, RG10A(H2S)/BGEF, RG10A(H2S)/BGEFU1, RG10A1(H2S)/BGEF, RG10A2(H2S)/BGEFU1, RG10A2(H2S)/BGCEFU1, RG10A2(H2S)/BGCEF, RG10A10(H2S)/BGEF, RG10A(G2S)/BGEF, RG10A(G2S)/BGEFU1, RG10A1(G2S)/BGEF, RG10A2(G2S)/BGEFU1, RG10A2(G2S)/BGCEFU1, RG10A2(G2S)/BGCEF, RG10A10(G2S)/BGEF, RG10Y2(F2S)/BGEF, RG10Y2(G2S)/BGEF, RG10Y2(H2S)/BGEF .
Rated Voltage	3.0V(Dry batteries R03/LR03×2)
Signal Receiving Range	8m
Environment	-5°C~60°C(23°F~140°F)

NOTE: For model of RG10Y2(F2S/G2S/H2S)/BGEF, If the unit is turned off under COOL, AUTO or DRY mode with the set temperature less than 24°C, the set temperature will be automatically set to 24°C when you turn on the unit again. If the unit is turned off under HEAT mode with the set temperature more than 24°C, the set temperature will be automatically set to 24°C when you turn on the unit again.

Quick Start Guide



NOT SURE WHAT A FUNCTION DOES?

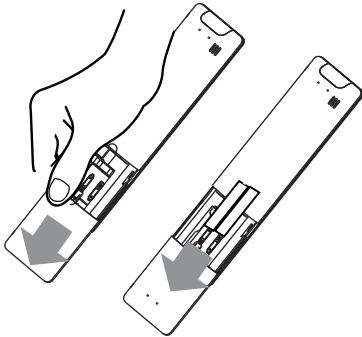
Refer to the **How to Use Basic Functions** and **How to Use Advanced Functions** sections of this manual for a detailed description of how to use your air conditioner.

Handling the Remote Controller

Inserting and Replacing Batteries

Your air conditioning unit may come with two batteries(some units). Put the batteries in the remote control before use.

1. Slide the back cover from the remote control downward, exposing the battery compartment.
2. Insert the batteries, paying attention to match up the (+) and (-) ends of the batteries with the symbols inside the battery compartment.
3. Slide the battery cover back into place.



! BATTERY NOTES

For optimum product performance:

- Do not mix old and new batteries, or batteries of different types.
- Do not leave batteries in the remote control if you don't plan on using the device for more than 2 months.



BATTERY DISPOSAL

Do not dispose of batteries as unsorted municipal waste. Refer to local laws for proper disposal of batteries.

TIPS FOR USING REMOTE CONTROL

- The remote control must be used within 8 meters of the unit.
- The unit will beep when remote signal is received.
- Curtains, other materials and direct sunlight can interfere with the infrared signal receiver.
- Remove batteries if the remote will not be used more than 2 months.

NOTES FOR USING REMOTE CONTROL

The device could comply with the local national regulations.

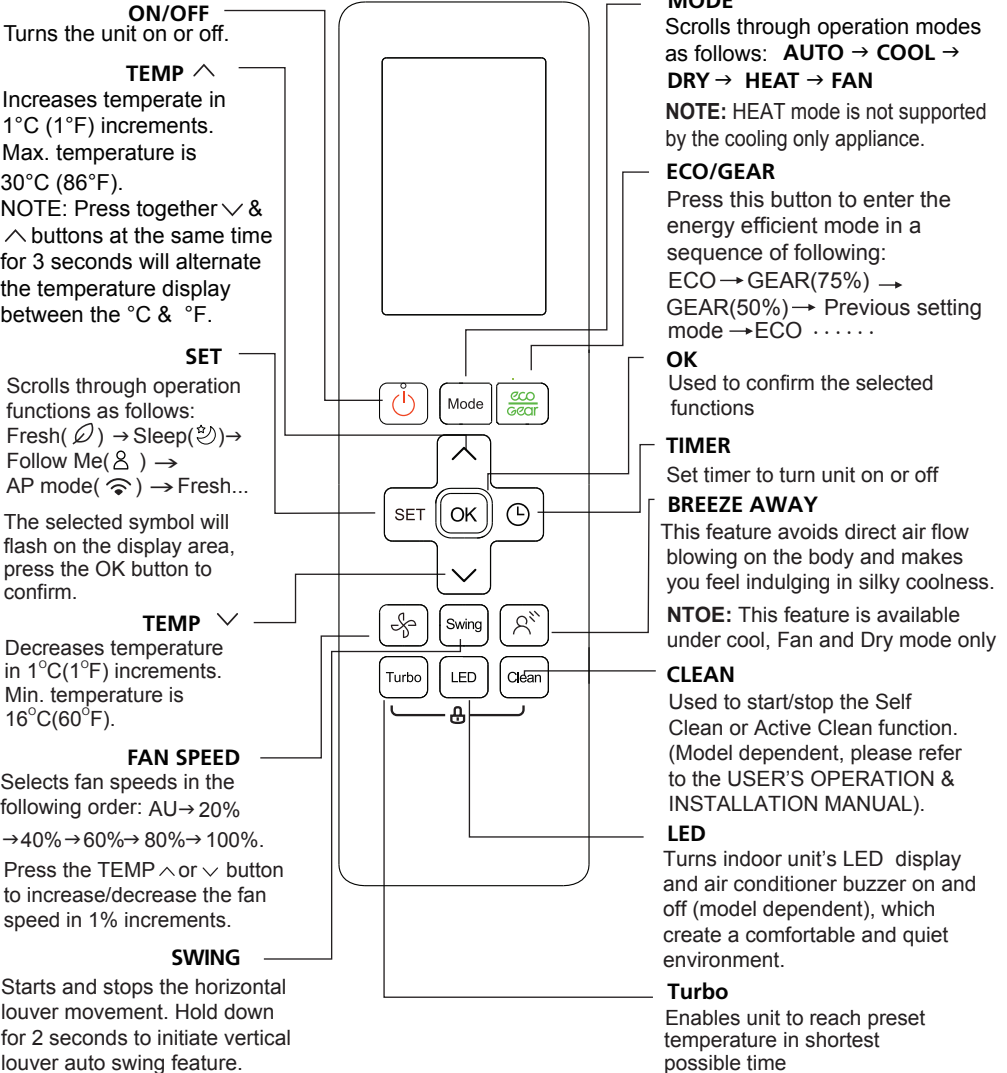
- In Canada, it should comply with CAN ICES-3(B)/NMB-3(B).
- In USA, this device complies with part 15 of the FCC Rules. Operation is subject to the following two conditions:
 - (1) This device may not cause harmful interference, and
 - (2) this device must accept any interference received, including interference that may cause undesired operation.

This equipment has been tested and found to comply with the limits for a Class B digital device, pursuant to part 15 of the FCC Rules. These limits are designed to provide reasonable protection against harmful interference in a residential installation. This equipment generates, uses and can radiate radio frequency energy and, if not installed and used in accordance with the instructions, may cause harmful interference to radio communications. However, there is no guarantee that interference will not occur in a particular installation. If this equipment does cause harmful interference to radio or television reception, which can be determined by turning the equipment off and on, the user is encouraged to try to correct the interference by one or more of the following measures:

- Reorient or relocate the receiving antenna.
- Increase the separation between the equipment and receiver.
- Connect the equipment into an outlet on a circuit different from that to which the receiver is connected.
- Consult the dealer or an experienced radio/TV technician for help.
- Changes or modifications not approved by the party responsible for compliance could void user's authority to operate the equipment.

Buttons and Functions

Before you begin using your new air conditioner, make sure to familiarize yourself with its remote control. The following is a brief introduction to the remote control itself. For instructions on how to operate your air conditioner, refer to the **How to Use Basic Functions** section of this manual.



Model: RG10A2(F2S/H2S/G2S)/BGEFU1
 RG10A10(F2S/G2S/H2S)/BGEF(20-28°C/68-82°F)
 RG10A(F2S/H2S/G2S)/BGEF, RG10Y2(F2S)/BGEF, RG10A(F2S/H2S/G2S)/BGEFU1
 (Fresh feature is not available)
 RG10A2(F2S/H2S/G2S)/BGCEFU1, RG10A2(F2S/H2S/G2S)/BGCEF
 (Cooling only models, AUTO mode and HEAT mode are not available)

ON/OFF
Turns the unit on or off.

TEMP \wedge
Increases temperature in 1°C (1°F) increments. Max. temperature is 30°C (86°F).
NOTE: Press together \vee & \wedge buttons at the same time for 3 seconds will alternate the temperature display between the °C & °F.

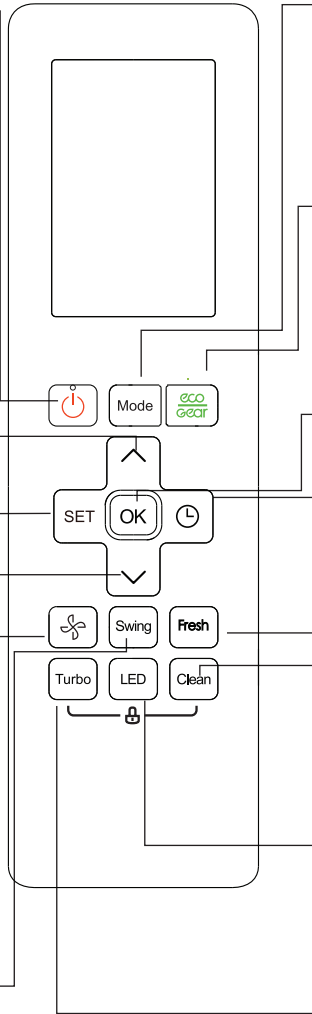
SET
Scrolls through operation functions as follows:
Breeze Away (☼) → Sleep (☾) → Follow Me (☺) → AP mode (☎) → Breeze Away ...

The selected symbol will flash on the display area, press OK button to confirm.

TEMP \vee
Decreases temperature in 1°C (1°F) increments. Min. temperature is 16°C (60°F).

FAN SPEED
Selects fan speeds in the following order: AU → 20% → 40% → 60% → 80% → 100%.
Press the TEMP \wedge or \vee button to increase/decrease the fan speed in 1% increments.

SWING
Starts and stops the horizontal louver movement. Hold down for 2 seconds to initiate vertical louver auto swing feature.



MODE
Scrolls through operation modes as follows: **AUTO** → **COOL** → **DRY** → **HEAT** → **FAN**
NOTE: HEAT mode is not supported by the cooling only appliance.

ECO/GEAR
Press this button to enter the energy efficient mode in a sequence of following:
ECO → GEAR(75%) → GEAR(50%) → Previous setting mode → ECO

OK
Used to confirm the selected functions

TIMER
Set timer to turn unit on or off

FRESH
Used to starts and stops the Fresh feature.

CLEAN
Used to start/stop the Self Clean or Active Clean function. (Model dependent, please refer to the USER'S OPERATION & INSTALLATION MANUAL).

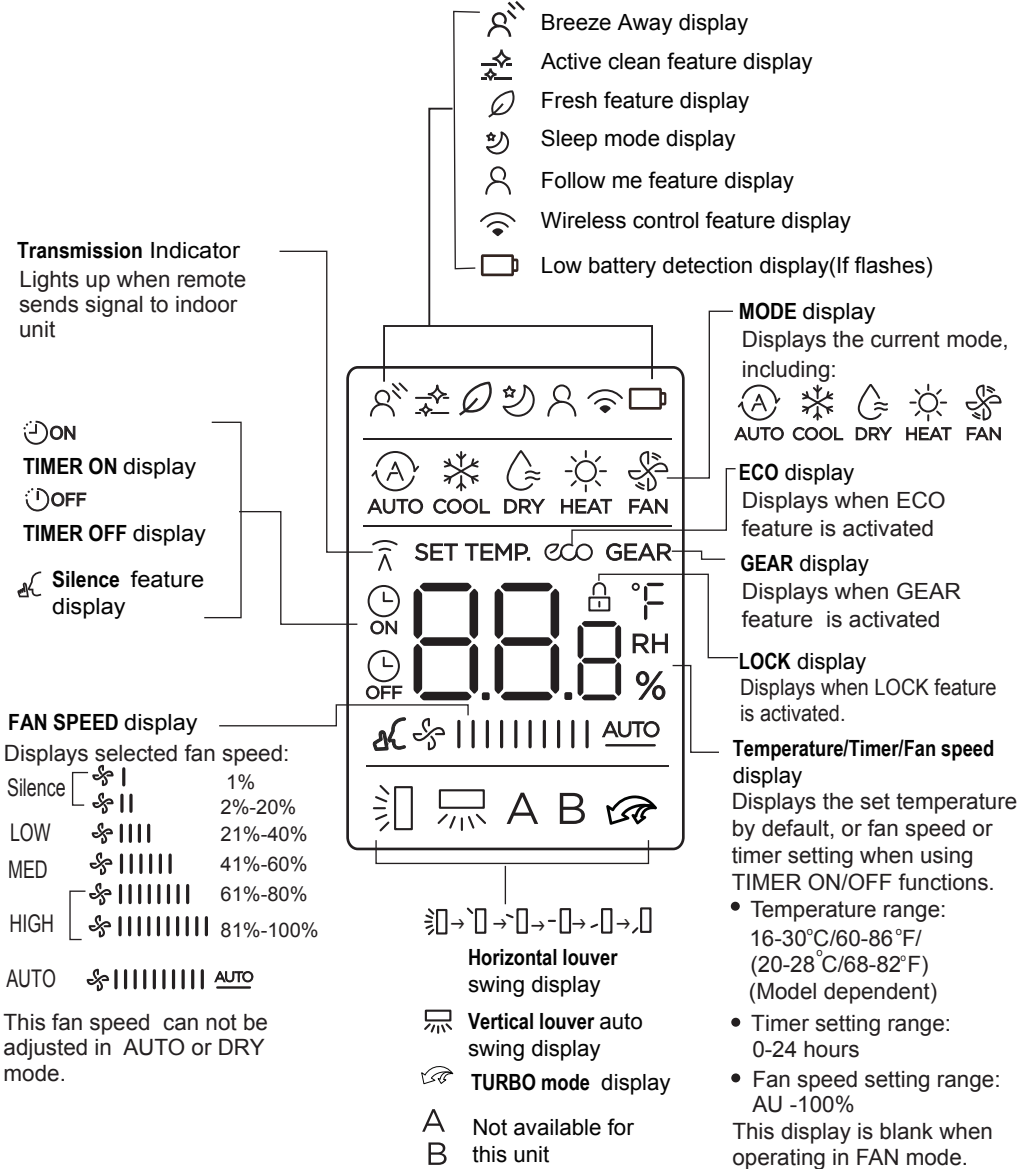
LED
Turns indoor unit's LED display and air conditioner buzzer on and off (model dependent), which create a comfortable and quiet environment.

Turbo
Enables unit to reach pr temperature in shortest possible time

Model: RG10A1(F2S/H2S/G2S)/BGEF

Remote Screen Indicators

Information are displayed when the remote controller is power up.



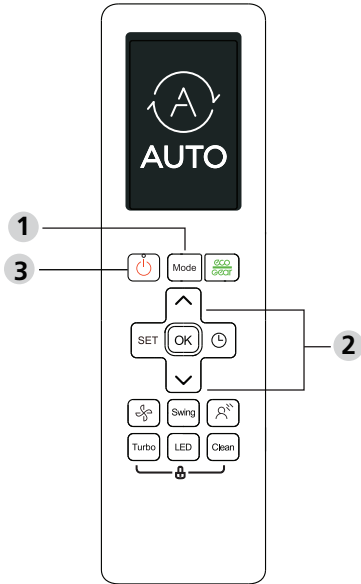
Note:

All indicators shown in the figure are for the purpose of clear presentation. But during the actual operation, only the relative function signs are shown on the display window.

How to Use Basic Functions

Basic operation

ATTENTION! Before operation, please ensure the unit is plugged in and power is available.



SETTING TEMPERATURE

The operating temperature range for units is 16-30°C (60-86°F)/20-28°C(68-82°F). You can increase or decrease the set temperature in 1°C (1°F) increments.

AUTO Mode

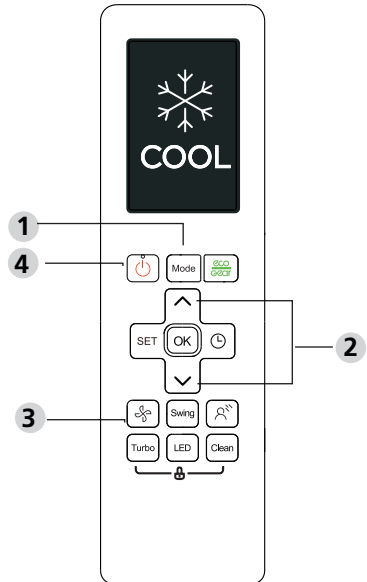
In AUTO mode, the unit will automatically select the COOL, FAN or HEAT operation based on the set temperature.

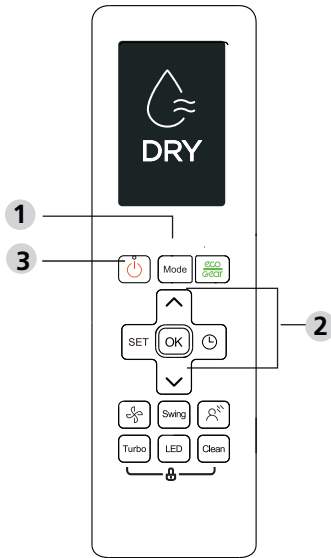
1. Press the **MODE** button to select **AUTO**.
2. Set your desired temperature using the **TEMP** \wedge or **TEMP** \vee button.
3. Press the **ON/OFF** button to start the unit.

NOTE: FAN SPEED can't be set in AUTO mode.

COOL Mode

1. Press the **MODE** button to select **COOL** mode.
2. Set your desired temperature using the **TEMP** \wedge or **TEMP** \vee button.
3. Press **FAN** button to select the fan speed in a range of AU-100%.
4. Press the **ON/OFF** button to start the unit.





DRY Mode (dehumidifying)

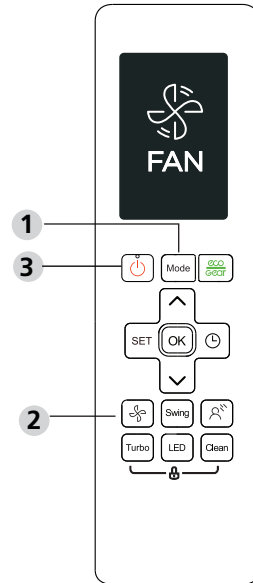
1. Press the **MODE** button to select **DRY**.
2. Set your desired temperature using the **TEMP ^** or **TEMP v** button.
3. Press the **ON/OFF** button to start the unit.

NOTE: FAN SPEED cannot be changed in DRY mode.

FAN Mode

1. Press the **MODE** button to select **FAN** mode.
2. Press **FAN** button to select the fan speed in a range of AU-100%.
3. Press the **ON/OFF** button to start the unit.

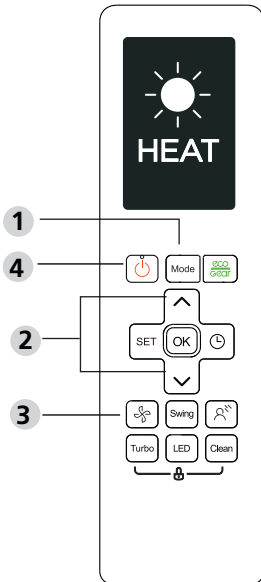
NOTE: You can't set temperature in FAN mode. As a result, your remote control's LCD screen will not display temperature.



HEAT Mode

1. Press the **MODE** button to select **HEAT** mode.
2. Set your desired temperature using the **TEMP ^** or **TEMP v** button.
3. Press **FAN** button to select the fan speed in a range of AU-100%.
4. Press the **ON/OFF** button to start the unit.

NOTE: As outdoor temperature drops, the performance of your unit's HEAT function may be affected. In such instances, we recommend using this air conditioner in conjunction with other heating appliances.



Setting the TIMER

TIMER ON/OFF - Set the amount of time after which the unit will automatically turn on/off.

TIMER ON setting

Press **TIMER** button to initiate the ON time sequence.



Press **Temp. up** or **down** button for multiple times to set the desired time to turn on the unit.



Point remote to unit and wait 1sec, the **TIMER ON** will be activated.



TIMER OFF setting

Press **TIMER** button to initiate the OFF time sequence.



Press **Temp. up** or **down** button for multiple times to set the desired time to turn off the unit.



Point remote to unit and wait 1sec, the **TIMER OFF** will be activated.

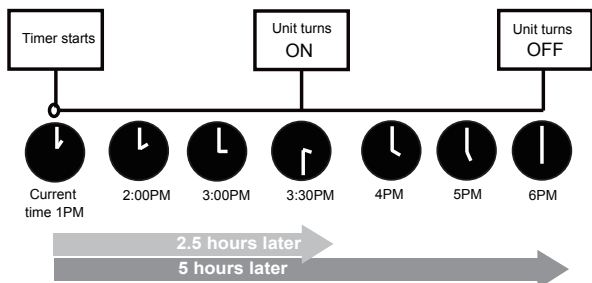
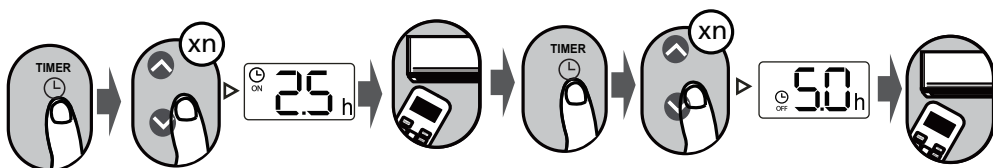


NOTE:

1. When setting the **TIMER ON** or **TIMER OFF**, the time will increase by 30 minutes increments with each press, up to 10 hours. After 10 hours and up to 24, it will increase in 1 hour increments. (For example, press 5 times to get 2.5h, and press 10 times to get 5h.) The timer will revert to 0.0 after 24.
2. Cancel either function by setting its timer to 0.0h.

TIMER ON & OFF setting(example)

Keep in mind that the time periods you set for both functions refer to hours after the current time.

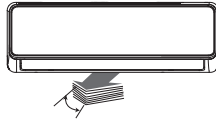


Example: If current timer is 1:00PM, to set the timer as above steps, the unit will turn on 2.5h later (3:30PM) and turn off at 6:00PM.

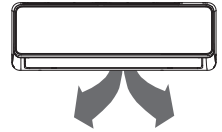
How to Use Advanced Functions

Swing function

Press Swing button

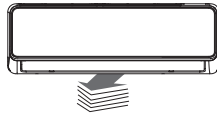


The horizontal louver will swing up and down automatically when pressing Swing button. Press again to make it stop.



Keep pressing this button more than 2 seconds, the vertical louver swing function is activated. (Model dependent)

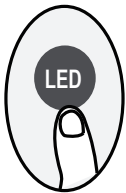
Airflow direction



If continue to press the SWING button, five different airflow directions can be set. The louver can be move at a certain range each time you press the button. Press the button until the direction you prefer is reached.

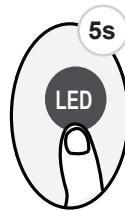
NOTE: When the unit is off, press and hold **MODE** and **SWING** buttons together for one second, the louver will open for a certain angle, which makes it very convenient for cleaning. Press and hold **MODE** and **SWING** buttons together for one second to reset the louver(Model dependent).

LED DISPLAY



Press LED button

Press this button to turn on and turn off the display on the indoor unit.



Press this button more than 5 seconds(some units)

Keep pressing this button more than 5 seconds, the indoor unit will display the actual room temperature. Press more than 5 seconds again will revert back to display the setting temperature.

ECO/GEAR function



Press X-ECO button to enter the energy efficient mode in a sequence of following:
ECO → GEAR(75%) → GEAR(50%) → Previous setting mode → ECO.....

Note: This function is only available under COOL mode.

ECO operation:

Under cooling mode, press this button, the remote controller will adjust the temperature automatically to 24°C/75°F, fan speed of Auto to save energy (only when the set temperature is less than 24°C/75°F). If the set temperature is above 24°C/75°F, press the ECO button, the fan speed will change to Auto, the set temperature will remain unchanged.

NOTE:

Pressing the ECO button, or modifying the mode or adjusting the set temperature to less than 24°C/75°F will stop ECO operation.

Under ECO operation, the set temperature should be 24°C/75°F or above, it may result in insufficient cooling. If you feel uncomfortable, just press the ECO button again to stop it.

GEAR operation:

Press the ECO/GEAR button to enter the GEAR operation as following:
75%(up to 75% electrical energy consumption)



50%(up to 50% electrical energy consumption)



Previous setting mode.

Under GEAR operation, the display on the remote controller will alternate between electrical energy consumption and set temperature.

Silence function



Keep pressing Fan button for more than 2 seconds to activate/disable Silence function(some units).

Due to low frequency operation of compressor, it may result in insufficient cooling and heating capacity. Press ON/OFF, Mode, Sleep, Turbo or Clean button while operating will cancel silence function.

FP function

Press this button 2 times during one second under HEAT Mode and setting temperature of 16°C/60°F or 20°C/68°F(for model RG10A10(F2S/H2S/G2S)/BGEF).

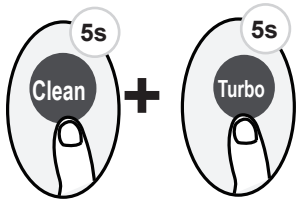


The unit will operate at high fan speed (while compressor on) with temperature automatically set to 8°C/46°F.

Note: This function is for heat pump air conditioner only.

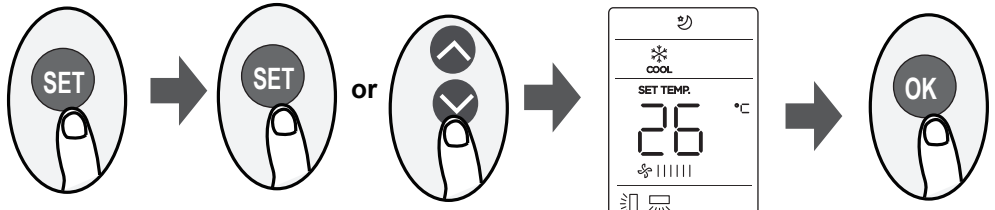
Press this button 2 times during one second under HEAT Mode and setting temperature of 16°C/60°F or 20°C/68°F(for model RG10A10(F2S/H2S/G2S)/BGEF) to activate FP function. Press On/Off, Sleep, Mode, Fan and Temp. button while operating will cancel this function.

LOCK function



Press together **Clean** button and **Turbo** button at the same time more than 5 seconds to activate Lock function. All buttons will not response except pressing these two buttons for two seconds again to disable locking.

SET function



- Press the SET button to enter the function setting, then press SET button or TEMP▼ or TEMP▲ button to select the desired function. The selected symbol will flash on the display area, press the OK button to confirm.
- To cancel the selected function, just perform the same procedures as above.
- Press the SET button to scroll through operation functions as follows:
Breeze Away*(Ⓐ) → Fresh*(Ⓛ) → Sleep(Ⓜ) → Follow Me(Ⓜ) → AP mode(Ⓜ)
[*]: If your remote controller has Breeze Away button or Fresh button, you can not use the SET button to select the Breeze Away or Fresh feature.

Breeze Away function(Ⓐ) (some units) :

This feature avoids direct air flow blowing on the body and makes you feel indulging in silky coolness.

NTOE: This feature is available under cool, Fan and Dry mode only.

FRESH function(Ⓛ) (some units) :

When the FRESH function is initiated, the Ionizer/Plasma Dust Collector(depending on models) is energized and will help to remove pollen and impurities from the air.

Sleep function(Ⓜ) :

The SLEEP function is used to decrease energy use while you sleep (and don't need the same temperature settings to stay comfortable). This function can only be activated via remote control.

For the detail, see "sleep operation" in "USER'S MANUAL".

Note: The SLEEP function is not available in FAN or DRY mode.

Follow me function(Ⓜ) :

The FOLLOW ME function enables the remote control to measure the temperature at its current location and send this signal to the air conditioner every 3 minutes interval. When using AUTO, COOL or HEAT modes, measuring ambient temperature from the remote control (instead of from the indoor unit itself) will enable the air conditioner to optimize the temperature around you and ensure maximum comfort.

NOTE: Press and hold Turbo button for seven seconds to start/stop memory feature of Follow Me function.

- If the memory feature is activated, "On" displays for 3 seconds on the screen.
- If the memory feature is stopped, "OF" displays for 3 seconds on the screen.
- While the memory feature is activated, press the ON/OFF button, shift the mode or power failure will not cancel the Follow me function.

AP function(Ⓜ) (some units) :

Choose AP mode to do wireless network configuration. For some units, it doesn't work by pressing the SET button. To enter the AP mode, continuously press the LED button seven times in 10 seconds.

HYUNDAI

For Inquiries, Please Contact:

Name of company: Alfasol d.o.o.

Address: Ulica kneza Branimira 189, 10040 Zagreb, Croatia

Tel. number: + 385 (0)1 292 29 84

E-mail: info@alfasol.hr

<https://www.hyundaiequipment-adria.com>

Imported/Distributed by Alfasol d.o.o.

Licensed by HYUNDAI Corporation, Korea