

HITACHI

Yutampo R32

Heat Pump Water Heater for Residential Housing



The simplest & most economical way to produce domestic hot water

Cooling & Heating



DHW solution for residential housing



Yutampo R32 Heat pump water heater

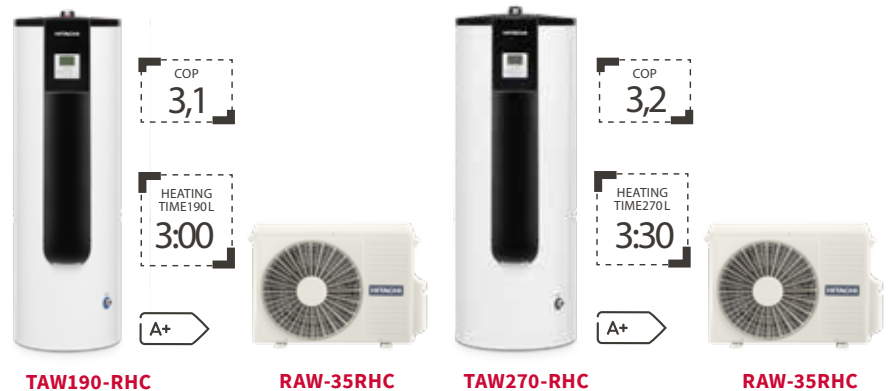
Exclusive
on the
market

What is new Yutampo R32?

Yutampo is a split heat pump water heater for the production of domestic hot water in **new** or **refurbishment residential applications**.

Yutampo R32 system is composed of **a floor-standing indoor unit (tank)** and **an outdoor unit**. Able to produce water up to 55°C (75°C with electric heater), Yutampo ensures **a high level of comfort** thanks to several functions of its LCD controller.

The new **Yutampo R32** meets the new F-gas regulation stipulating the reduction of CO2 emissions. Due to its low GWP (Global Warming Potential) and reduced charge volume, the R32 refrigerant used in Yutampo system allows to **minimize its environmental impact** while maintaining **higher performance** and **lower energy consumption**.



What are key benefits?

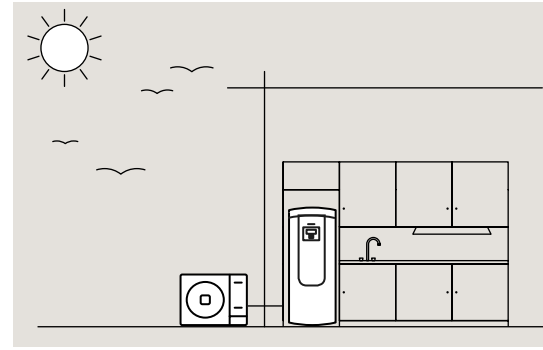
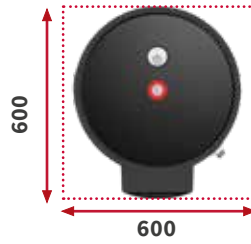
- **Eco-friendly product in line with F-gas regulation**
The first R32 heat pump water heater on the market **fully compliant with EN378**
- **High efficiency**
Production of domestic hot water due to **renewable energy**. **Low consumption & best-in-class performances** with the **Inverter compressor**
- **Reliability**
High quality of the tank due to **DUPLEX stainless steel** material ensuring a high level of corrosion resistance, **reinforced insulation** around the tank and an extended lifespan with **active anode protection**
- **Controls**
Relevant functions directly available on **LCD controller** that **facilitates installer's work**: heat pump details with operational data, dedicated commissioning menu, optional functions, etc. Additional functions dedicated to **end-users' comfort**: weekly timer, DHW modes, anti legionella, night mode, etc.
- **Connectivity**
Save time, money, limit downtime and increase customer satisfaction with Hitachi remote maintenance **HiKumo Pro**. Allow customers to take control of Yutampo from everywhere with **HiKumo App**

 **HiKumo App for easy remote control**

 **HiKumo PRO for easy remote maintenance**



Yutampo R32 Installation



Easy & flexible installation

Thanks to its small footprint, **Yutampo R32** can be easily installed in a standard cupboard (**600 x 600 mm**). Flexibility of installation is ensured with a maximum **refrigerant pipings' length up to 20m**.



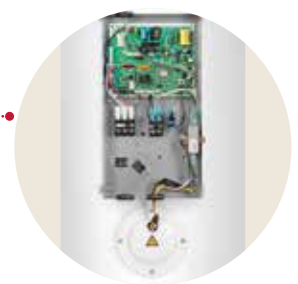
Active anode (option) connection
 • Reinforced tank protection



Water outlet connection



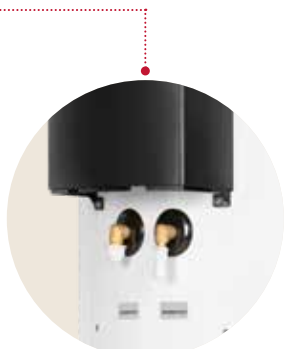
LCD controller
 • Clear text
 • Multilingual



EBOX & electric heater
 • 1,64 kW



Front panel
 • New shape
 • Divided in 2 parts



Water inlet connection

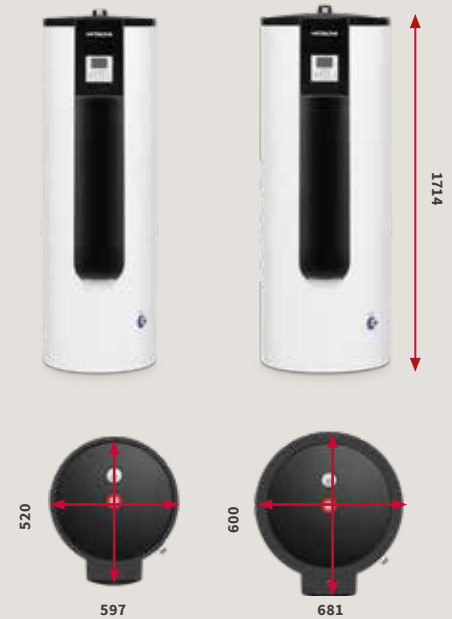
Refrigerant connections
 • Hidden connections

Yutampo R32

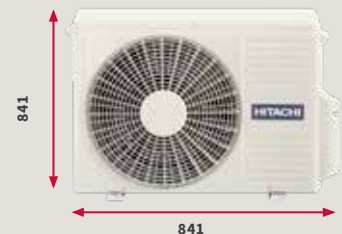
Technical features



INDOOR UNIT (TANK)	UNIT	TAW-190RHC	TAW-270RHC
Power supply	-	1~ 230V 50Hz	
Sound power level	dB(A)		
Temperature setting range	°C	30~75	
DHW performances (certified according to EN 16147)			
Declared load profile	-	L	XL
COP _{DHW}	-	3,1	3,2
Heat up time	h:mm	3:00	3:30
Maximum volume of usable hot water (V _{max})	L		
Standby power (P _{es})	W		
Reference hot water temperature (Θ _{wh})	°C		
Refrigerant data			
Refrigerant piping diameter (Liquid / Gas)	inch	6.35 / 9.52	6.35 / 9.52
Electrical data			
Cable section (Power)	mm ²	1.5	
Electric heater capacity	kW	1.5	
Recommended fuse for Electric heater	A	10	
Power cable of Electric heater		2 + Earth	
Connection wires between Tank & ODU		3	
Dimensions & Weight			
Ø x H x D	mm	520 x 1714 x 597	600 x 1714 x 681
Net weight	kg	53	62
Other information			
Tank material	-	DUPLEX Stainless steel	
IP protection		X1B	



OUTDOOR UNIT	UNIT	RAW-35RHC
Power supply	-	1~ 230V 50Hz
Outdoor air temperature working range	°C	-15~37
Capacity	kW	3.5
Sound power	dB(A)	
IP protection	IP	24
Compressor type	-	Rotary
ErP data (Average climate)		
Energy efficiency η _{wh}	%	
Energy efficiency class	-	
Annual electricity consumption	kWh	
Refrigerant data		
Refrigerant (GWP)	-	R32 (675)
Refrigerant charge	kg	1
Refrigerant piping diameter (Liquid / Gas)	inch	¼ - 3/8
Minimum piping length	m	5
Maximum piping length / height difference	m	20 / 10
Electrical data		
Cable section (Power)	mm ²	1.5 x 2 + Earth
Cable section (Interconnection)	mm ²	0.75 x 3 + Earth
Recommended fuse	A	15
Dimensions & Weight		
W x H x D	mm	841 x 548 x 335
Net weight	kg	



Yutampo R32 Controls & accessories

Controls



HiKumo solution

Control Yutampo R32 from your smartphone with **HiKumo App** and enjoy maintenance services with **HiKumo PRO** platform



ATW-TAG-02
Gateway

AHP-SMB-01
Hi-Box

Modbus solution

Connect your Yutampo R32 to BMS via **Modbus**



ATW-MBS-02 Gateway



KNX solution

Connect your Yutampo R32 to BMS via **KNX**



ATW-KNX-02 Gateway



HiKumo PRO



HiKumo App



Other accessories



Active anode **ATW-CP-05**

- Reinforce protection of the tank with a cathodic protection
- No maintenance required



Optional function connector **ATW-OFC-02**

- Inputs & Outputs functions signal
- Opportunity to configure 3 inputs and 4 outputs according to customer's needs (Smart action, DHW boost, Smart Grid, recirculation etc)



Johnson Controls Hitachi Air Conditioning Europe S.A.S.

EUROPEAN PRODUCT DEVELOPMENT DEPARTMENT

2, Rue de Lombardie, Parc Aktiland II
69800 Saint Priest
FRANCE
Tel: +33-4-3742-0002

hitachiaircon.com



The specifications of this catalog may change without prior notice to allow Hitachi Cooling & Heating to incorporate the latest innovations for its customers. The information contained in this catalog is merely informative. Hitachi Cooling & Heating declines any responsibility in the broadest sense, for damage, direct or indirect, arising from the use and / or interpretation of the recommendations in this catalog

Find the products Hitachi Cooling & Heating with the best service and conditions at your Hitachi Distributor.