

The English text is the original instruction. Other languages are translations of the original instructions. Refer to <http://www.daikineurope.com/support-and-manuals/product-information/> for more detailed user reference guides. Installation: see page 2.

OPERATION

1. General safety precautions

Also see operation manual attached to the outdoor and indoor unit.

Please read these "1. General safety precautions" carefully before installing air conditioning equipment and be sure to install it correctly.

Failure to follow these instructions properly may result in property damage or personal injury, which may be serious depending on the circumstances.

WARNING
Do NOT play with the unit or its remote controller. Accidental operation by a child may result in impairment of bodily functions and harm health.

WARNING
Never disassemble the remote controller. Touching the interior parts may result in electric shocks or fire. Consult your Daikin dealer or authorized contactor for internal inspections and adjustments.

WARNING
To avoid electric shocks, do not operate with wet hands.

WARNING
Do NOT modify or repair the remote controller. This may result in electric shocks or fire. Consult your Daikin dealer.
Do NOT relocate or reinstall the remote controller by yourself. Improper installation may result in electric shocks or fire. Consult your Daikin dealer.
Do NOT use flammable materials (e.g. hairspray or insecticide) near the product. Do not clean the product with organic solvents such as paint thinner. The use of organic solvents may cause crack damage to the product, electric shocks, or fire.

2. Features and functions

The BRC1E53 is a state of the art remote controller that offers full control over your installation.

1 BASIC REMOTE CONTROLLER

The basic remote controller functions are:

- ON/OFF,
- operation mode change-over,
- temperature adjustment,
- air volume adjustment,
- airflow direction adjustment.

2 CLOCK FUNCTION

The clock functions are:

- 12/24 hours real time clock,
- automatic daylight saving time.

3 SCHEDULE FUNCTION

The schedule timer functions are:

- a maximum of 5 actions can be programmed for each day of the week,
- 3 independent schedules can be programmed,
- schedule can be enabled/disabled at any time,
- linked to a cool temperature and/or heat temperature or an OFF operation (with or without a setback temperature),
- "last command" overrules previous command until next scheduled command.

4 SETBACK

The setback function maintains the room temperature in a specific range when the occupants are out for a longer period and the airconditioning is switched OFF.

5 PROHIBIT BUTTON/FUNCTION

Buttons, functions and/or modes can be locked to limit the user action.

6 DETAILED DISPLAY POSSIBILITY

Additionally possible to display the outdoor temperature or room temperature.

7 Duty rotation

Auto backup unit and auto rotation to maximize your airconditioners' life.

8 Demand control

Make up an energy reduction schedule.

9 Quiet mode

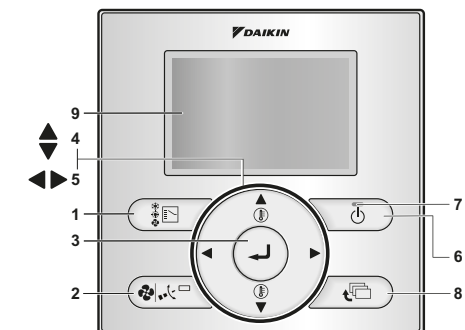
Schedule a quiet mode for your outdoor unit(s).

10 INTERLOCK WITH 2 EXTERNAL SIGNALS

(Only available when the BRP7A51 Digital Input Adapter is connected)

- Connect up to two switch contacts (contact B1 and B2).
- Typical application: hotel interlock with field supplied window contact B1 and key card B2.

3. Name and function of switches



1 OPERATION MODE SELECTOR BUTTON

To select the operation mode of your preference.

2 FAN SPEED/AIRFLOW DIRECTION SETTING BUTTON

To enter the fan speed/airflow direction setting screen.

3 MENU/ENTER BUTTON

To enter the main menu or the selected setting item.

4 UP/DOWN BUTTON

To raise/lower the set temperature, to highlight the next item on the upper/lower side or to change the selected item.

5 RIGHT/LEFT BUTTON

To highlight the next item on the right/left-hand side.

6 ON/OFF BUTTON

To start or stop the system.

INFORMATION

This is the only button that works when the backlight is not lit.

7 OPERATION LAMP

Lights up during operation or blinks if a malfunction occurs.

8 CANCEL BUTTON

To return to the previous screen.

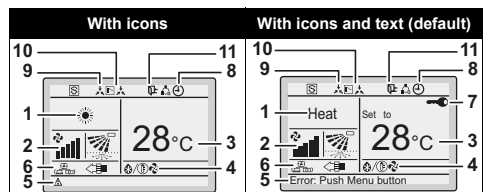
9 LCD (with backlight)

When pushing any operation button, the backlight will be lit for approximately 30 seconds. When 1 indoor unit is controlled by 2 remote controllers, the backlight of the remote controller operated earlier than the other one will be lit.

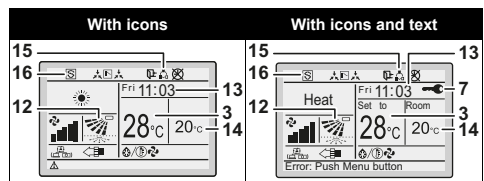
4. Name and function of icons

To change between the standard display and the detailed display refer to "17.4 To select the display mode".

Standard display



Detailed display



1 OPERATION MODE

Operation mode			
cool	Heat	Vent	Air Clean
Fan	Dry	Auto (Cool)	Auto(Heat)

2 FAN SPEED

Indicates the fan speed that is set for the air conditioner. If the air conditioner does not have fan speed control function, the fan speed will not be displayed.

3 SET/SETBACK TEMPERATURE DISPLAY

When the unit is turned on, **Set to** indicates the temperatures that are set for the air conditioner.

When the unit is turned off, **Setback** indicates the temperatures that are set for the setback function.

4 DEFROST/HOT START

Indicates that the defrost/hot start mode is active.

5 MESSAGE

Messages can be displayed.

6 VENTILATION/CLEANING

Ventilation mode icons indicate the current ventilation mode (HRV only) (AUTOMATIC, ENERGY RECLAIM VENT, BYPASS).

Air Cleaning unit icon indicates that the air cleaning unit (option) is operational.

7 DISPLAY

Indicates that the key lock is set or the menu button is prohibited.

8 DISPLAY

Indicates that schedule timer or OFF timer is enabled.

DISPLAY

Indicates that the clock needs to be set. The schedule timer function will not work until the clock is set.

9 EXTERNAL CONTROL ICON

Indicates that another controller with higher priority is controlling or disabling your remote controller.

10 CHANGEOVER UNDER CENTRALISED CONTROL ICON

Indicates that the changeover of the installation is under centralised control assigned to another indoor unit or optional cool/heat selector connected to the outdoor unit (= master remote controller).

11 SETBACK ICON

Flashes when the unit is turned on under the setback control.

12 AIRFLOW DIRECTION

Is displayed when the airflow direction and swing are set.

13 CLOCK (12/24 Hours real time clock)

Is displayed when the clock is set. If the clock is not set, -- is displayed.

14 DETAILED SELECTION

Is displayed when the detailed display items are selected.

15 ROTATION

Indicates one unit is set as back-up and rotation mode is enabled.

16 QUIET MODE

Indicates the HVAC system runs in quiet mode or under demand control.

5. Description of the operation modes

1 FAN ONLY OPERATION

In this mode, air only circulates without heating or cooling.

2 DRY OPERATION

In this mode, the air humidity will be lowered with a minimal temperature decrease.

The temperature and fan speed are controlled automatically and cannot be controlled by the remote controller.

Dry operation will not function if the room temperature is too low.

3 AUTOMATIC OPERATION

In this mode, the controller will automatically switch between heating and cooling as required by the setpoint.

4 COOLING OPERATION

In this mode, cooling will be activated as required by the setpoint or limit operation.

5 HEATING OPERATION

In this mode, heating will be activated as required by the setpoint or setback operation.

6 VENTILATION (HRV only)

The ventilation mode operates the HRV; refer to the HRV manual for more details.

7 SETBACK

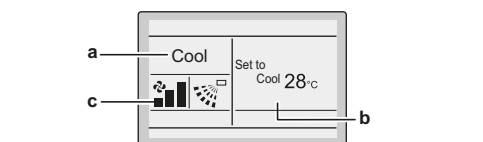
SETBACK is a feature that enables to keep the room temperature in a specific range when the occupants are out and the airconditioning is switched OFF.

For example:

- If the room temperature drops below 10°C, heating is started automatically. As soon as 12°C is reached, the controller returns to its original status.
- If the room temperature goes above 35°C, cooling is started automatically. As soon as 33°C is reached, the controller returns to its original status.

The differential can be adjusted in the Setback configuration menu. The setback temperature can be set during the unit is turned off on basic screen or set in the schedule.

6. Basic operation method



a Operation mode

b Temperature:

- When the unit is turned on, **Set to** indicates the temperatures that are set for the air conditioner.
- When the unit is turned off, **Setback** indicates the temperatures that are set for the setback function.
- Fan speed/Airflow direction

1 Push several times until the desired operation mode **Cool, Heat, Vent, Fan, Dry, or Auto** is selected.

2 Push . The operation lamp will light and the system starts operating.

3 Use to set the temperature.

INFORMATION

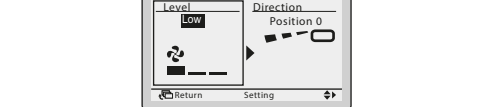
When in **Dry** or **Vent** mode, the fan speed can not be set.

4 Push

To select airflow **Level** or **Direction** setting.

5 Use

To select the desired fan speed.

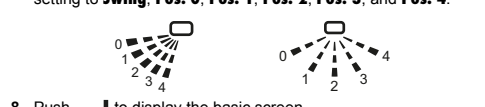


6 With fan speed setting selected, use to select the desired fan speed.

INFORMATION

When in **Dry** or **Vent** mode, the fan speed can not be set.

7 With airflow direction setting selected, use to change the setting to **Swing, Pos. 0, Pos. 1, Pos. 2, Pos. 3, and Pos. 4**.

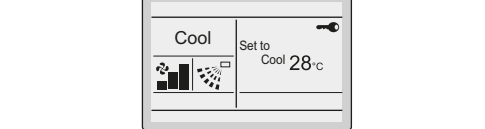


8 Push to display the basic screen.

9 Push . The operation lamp will turn off and the system stops operating.

Additional features of the controller: KEY LOCK

1 Push for 4 seconds to enable the key lock mode. The key lock icon is displayed.



2 To cancel the key lock mode, push for 4 seconds. The key lock icon disappears.

7. Description of the items in the main menu

1 LOCK

To prohibit buttons, functions or modes.

2 ROTATION

To enable the duty rotation functionality. (Only available with indoor units that support duty rotation)

3 AIRFLOW DIRECTION¹/INDIVIDUAL AIR DIRECTION (only if the individual airflow function is installed)

To set the airflow direction for each 4 flaps individually.

4 QUICK START¹ (SkyAir only)

To quickly set the room temperature to a comfortable temperature.

5 VENTILATION

To set the ventilation rate and the ventilation mode (HRV only).

6 ENERGY SAVING OPTIONS

This allows you to restrict the setting temperature range and display the energy consumption.

- Setpoint Range Setting
- Energy saving list
- Setback condition
- Sensing sensor (Low)^{1, 2} (Only if sensing sensor is installed)
- Sensing sensor (Stop)^{1, 2} (Only if sensing sensor is installed)
- Setpoint Auto Reset
- OFF Timer
- Auto display OFF
- For more information refer to the detailed user reference guide³
- Energy Consumption¹

- This function is not compatible with SkyAir RR+RQ units.
- In case of a simultaneous operation system, the system is controlled by the sensing sensor mounted in the master indoor unit.
- The detailed user reference guide and installer reference guide are available on <http://www.daikineurope.com/support-and-manuals/product-information/>.

7 SCHEDULE⁴

To set the startup time and operation stop time for any day of the week. It is possible to set up to 5 actions per day. Both operation modes (normal and setback) can be selected. Additionally the holiday settings and schedule nr can be set.

8 MAINTENANCE INFORMATION

Is used to display the service contact and model info.

9 CONFIGURATION

To set the LCD contrast. You can also switch between standard and detailed display. When detailed display is selected, the detailed display settings can be changed. You can also set **Quiet mode** and **Draft prevention**.

10 CURRENT SETTINGS

This shows a list of the current settings for the available items.

11 CLOCK & CALENDAR

This allows you to set the date and time. Time can be displayed in either 12 hour or 24 hour time format.

12 LANGUAGE

This allows you to set the displayed language.

8. Lock

1 Display the main menu.

2 Press the button for 4 seconds.

3 Use to select the **Lock** item and press .

4 Use the submenu's to prohibit buttons, functions or modes.

For more information refer to the detailed user reference guide³.

9. Rotation

1 Display the main menu.

2 Push the button for 4 seconds.

3 Use to select the **Rotation** function and press .

4 Use the submenu to **Enable** or **Disable Rotation** and to configure the rotation cycle.

For more information refer to the detailed installer reference guide³.

10. Airflow direction¹/Individual air direction

For more information refer to the detailed user reference guide³.

11. Quick start (SkyAir only)¹

1 Display the **Main Menu** and proceed step (9) to display the basic screen (Refer to "22. Main menu structure" and "Appendix").

2 **Quick Start** will appear on the basic screen when the Quick Start function is turned ON.

INFORMATION

Repeat this procedure to turn **Quick Start** function off.

12. Ventilation

Only in case an HRV is connected. Refer to the HRV manuals for more information.

13. Energy saving options

For more information refer to the detailed user reference guide³.

14. Schedule

14.1 To enable/disable the schedule

1 Display the **Enable/Disable setting** screen (14.1) (Refer to "22. Main menu structure" and "Appendix").

2 Use to change the setting to **Enable** or **Disable**.

INFORMATION

Push to display the confirmation screen.

4 Use to select **Yes** and push .

14.2 To select the schedule number

1 Display the **Select Schedule** screen (14.2) (Refer to "22. Main menu structure" and "Appendix").

2 Use to change the setting to **Schedule nr 1, Schedule nr 2, or Schedule nr 3**.

INFORMATION

Push to display the confirmation screen.

4 Use to select **Yes** and push .

INFORMATION

Push to display the confirmation screen.

4 Use to select **Yes** and push .

INFORMATION

Push to display the confirmation screen.

4 Use to select **Yes** and push .

17.2 To select quiet mode settings

1 Display the **Quiet Operation Mode** settings screen.

2 Display the **Settings** screen (17.2).

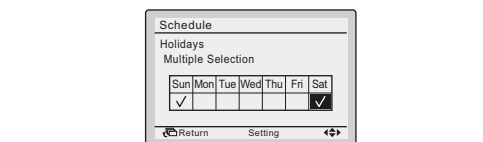
3 Use to select the **start** or **End time**.

14.3 To use the holidays

The schedule timer will be disabled for the days that have been set as holiday.

1 Display the **Holidays** screen (14.3) (Refer to "22. Main menu structure" and "Appendix").

2 Use to select the desired day. Push to display to set the holiday.



3 Push to display the confirmation screen.

4 Use to select **Yes** and push .

- Use to modify the time.
- Push to display the confirmation screen.
- Use to select **Yes** and push .

17.3 To select the draft prevention

- Display the **Draft prevention** settings screen (17.3) (Refer to "22. Main menu structure" and "Appendix").
- Use to select **Enable** or **Disable**.
- Push to display the confirmation screen.
- Use to select **Yes** and push .

17.4 To select the display mode

- Display the **Display Mode** settings screen (17.4) (Refer to "22. Main menu structure" and "Appendix").
- Use to change the setting to **Standard** or **Details**.
- Push to confirm the setting. Basic screen is displayed.

17.5 To select the detailed display item

- Display the **Display Item** settings screen (17.5) (Refer to "22. Main menu structure" and "Appendix").
- Use to change the setting to **None**, **Outside Air Temp**, **Room Temp** or **System**.
- Push to confirm the setting. Basic screen is displayed.

17.6 To adjust the contrast of the LCD

- Display the **Contrast adjustment** settings screen (17.6) (Refer to "22. Main menu structure" and "Appendix").
- Use to change the contrast.
- Push to confirm the setting.

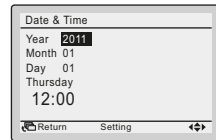
18. Current settings

- Display the **Setting status list** screen (18) (Refer to "22. Main menu structure" and "Appendix").
- A list of the current setting status is displayed.
- Push to return to the **Main Menu**.

19. Clock & calendar

19.1 To set the date & time

- Display the **Date & Time** settings screen (19.1) (Refer to "22. Main menu structure" and "Appendix").
- Use to select and to set **Year**, **Month**, **Day**, and **time**.



- Push to display the confirmation screen.
- Use to select **Yes** and push .

19.2 To set the hour format (12/24 hours)

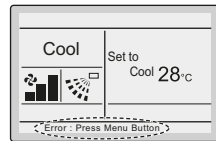
- Display the **12H/24H Clock** settings screen (19.2) (Refer to "22. Main menu structure" and "Appendix").
- Use to select **12H** or **24H**.
- Push to display the confirmation screen.
- Use to select **Yes** and push .

20. Language

- Display the **Language** screen (20) (Refer to "22. Main menu structure" and "Appendix").
- Use to select the language.
- Push to confirm the setting. Basic screen is displayed.

21. Error code display

- If an error occurs, **Error: Push Menu Button** or **Warning: Push Menu Button** will blink in the basic screen.



- Push . The error code will blink and the **Contact Info** and **model info** will be displayed.

22. Main menu structure

See "Appendix".

INSTALLATION

For more information refer to the detailed installer reference guide¹.

- The detailed user reference guide and installer reference guide are available on <http://www.daikineurope.com/support-and-manuals/product-information/>.

1. General safety precautions

- Carefully read these instructions before installation. They will tell you how to install, how to configure and how to use the unit properly. Keep this manual in a handy place for future reference.

This is an option to be used in combination with Daikin units. Refer to the installation and operation manual of the units for installation and operation instructions.

Please read these "1. General safety precautions" carefully before installing the remote controller.

Improper installation or attachment of equipment or accessories could result in electric shock, short-circuit, leaks, fire or other damage to the equipment or personal injury.

If unsure of installation procedures or use, always contact your dealer for advice and information.

Do **NOT** install the remote controller by yourself. Improper installation may result in electric shocks or fire. Consult your Daikin dealer.

- All field wiring and components must be installed by an installer and must comply with the applicable legislation.

NOTICE

- When the remote controller thermo function is used, select the installation location considering it should be a place:
 - where the average temperature in the room can be detected,
 - that is not exposed to direct sunlight,
 - that is not near a heat source,
 - that is not affected by outside air or air draught due to e.g. door opening/closing,
 - where the display is kept clean.
 - where the front is kept clear.
 - where the temperature is between -10°C and 50°C.
 - where the relative humidity is max. 95%.

NOTICE

- Do **NOT** install the remote controller:
 - Near machinery emitting electromagnetic radiation. Electromagnetic radiation may disturb the operation of the control system and result in a malfunction of the unit.
 - In moist areas or places where it may be exposed to water. If water enters the remote controller, electric shocks may be caused and the inner electronics may fail.

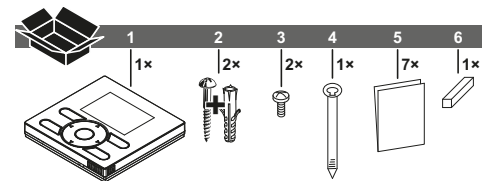
After finishing installation:

- conduct a trial operation to check for faults,
- explain the customer how to operate the remote controller, using the **Operation** part of this manual,
- ask the customer to store the manual for future reference.

WARNING

- Consult your local dealer regarding relocation and reinstallation of the remote controller.

2. What is in the box



- Remote controller
- Wood screws+wall plugs
- Small screws
- Clamp
- Installation and operation manual
- Wiring retainer

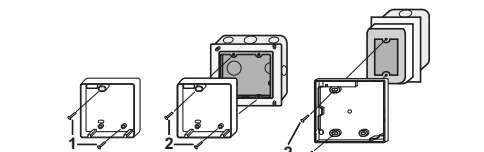
3. Remove the upper part of remote controller

- Insert a slot screwdriver into the slots (1) in the lower part of the remote controller (2 places), and remove the upper part of the remote controller.

NOTICE

- The PCB is mounted in the upper part of the remote controller. Be careful not to damage the board with the slot screwdriver.

4. Fasten the remote controller



- for exposed mounting, fasten with the 2 included wood screws (Ø3.5x32) and plugs.
- for flush-mounting, fasten with the 2 included machine screws (M4x16).

For the field supplied switch box, use optional accessory KJB111A or KJB211A.

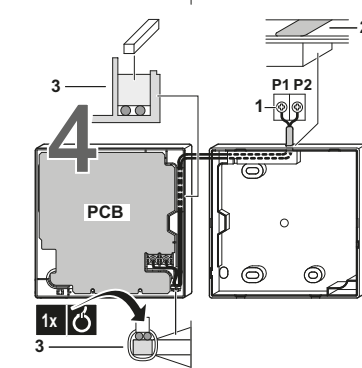
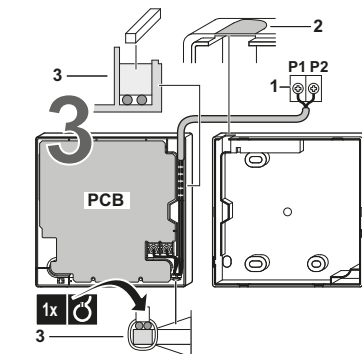
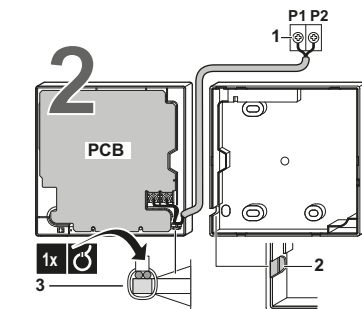
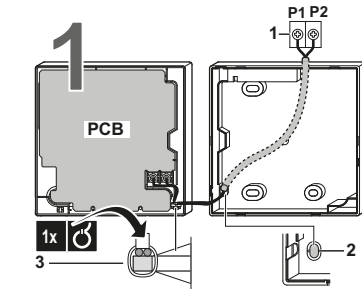
INFORMATION

- Put on a flat surface. Be careful not to distort the shape of the back plate of the remote controller by overtightening the mounting screws.

5. Wire the indoor unit

4 methods:

- from the rear,
- from the left,
- from the top,
- from the top center.



- indoor unit
- notch the part for the wiring to pass through with nippers, etc.
- secure the wiring to the uppercase using the wiring retainer and clamp.

Connect the terminals on the remote controller (P1, P2), and the terminals of the indoor unit (P1, P2). (P1 and P2 do not have polarity.)

INFORMATION

- When wiring, run the wiring away from the power supply wiring in order to avoid receiving electric noise (external noise).

Wiring specifications

Wiring type	Size	Total length
Sheathed vinyl cord or cable	0.75-1.25 mm ²	≤500 m

INFORMATION

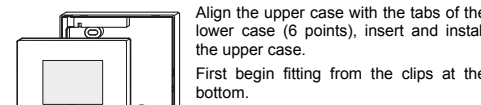
- Peel the sheet for the part that has to pass through the inside of the remote controller case (L). Refer to the figure and the table below. It is important to keep double isolation up through the notch of the remote controller case.
- For easy wiring, it's better to keep ±10 mm difference between the length of the 2 wires.

Wiring outlet	L
Top outlet	±150 mm
Top center outlet	±200 mm

6. Reattach the upper part of the remote controller

NOTICE

- Be careful not to pinch the wiring when attaching.



NOTICE

- The switch box and wiring for connection are not included.
- Do not directly touch the PCB with your hand.

7. Power on

- Put on the power.
- Checking the connection.** Please stand by. is displayed.
- After a few seconds, the basic screen is displayed.

If controlling 1 indoor unit or 1 group of indoor units with 2 remote controllers

- Put on the power for both remote controllers.
- Determine which one is the sub/main remote controller.
- When **Error code:U5 - Checking the connection. Please stand by.** is displayed on both remote controllers, push and hold the button of the sub remote controller for 4 seconds.
- The sub remote controller now displays **Sub RC**.

INFORMATION

- The main remote controller still displays **Main RC**.

After a few seconds, the basic screen is displayed.

Refer to the detailed installer reference guide¹ for more detailed installation instructions concerning:

- Field settings,
- Test operation method (in case of SkyAir),
- Checking procedure of Error History,
- Registration method of the Maintenance Contact,
- Confirmation of registered details,
- Clock & Calendar (see also "19. Clock & calendar" on page 2),
- Language (see also "20. Language" on page 2),
- Prohibit button,
- Function Prohibition,
- Demand control,
- Duty rotation,
- External Input Interlock,
- Single and Dual Setpoint mode,
- Software update with Updater.

MAINTENANCE

1. General safety precautions

Wipe the LCD and other surface parts of the remote controller with a dry cloth when they become dirty.

If the dirt on the surface can not be removed, soak the cloth in neutral detergent diluted with water, squeeze the cloth tightly, and clean the surface. Wipe the surface with a dry cloth then.

WARNING

- Do not use any paint thinner, organic solvent, or strong acid.

WARNING

- Do not wash the remote controller. Doing so may cause electric leakage and result in electric shocks or fire.

WARNING

- Be sure to stop the operation of the air conditioner and turn off the power supply breaker at the time of maintenance. Failure to do so may result in electric shocks or injury.

2. Filter sign resetting

- When one of the following messages (**Time to clean filter**, **Time to clean filter and element**, or **Time to clean element**) appears on the bottom of the basic screen, the filter has to be cleaned.
- After the filter or element is washed, cleaned, or replaced, push to enter the **Main Menu**.
- Use to select **Reset Filter Indicator** and push to reset the filter sign.

APPENDIX

